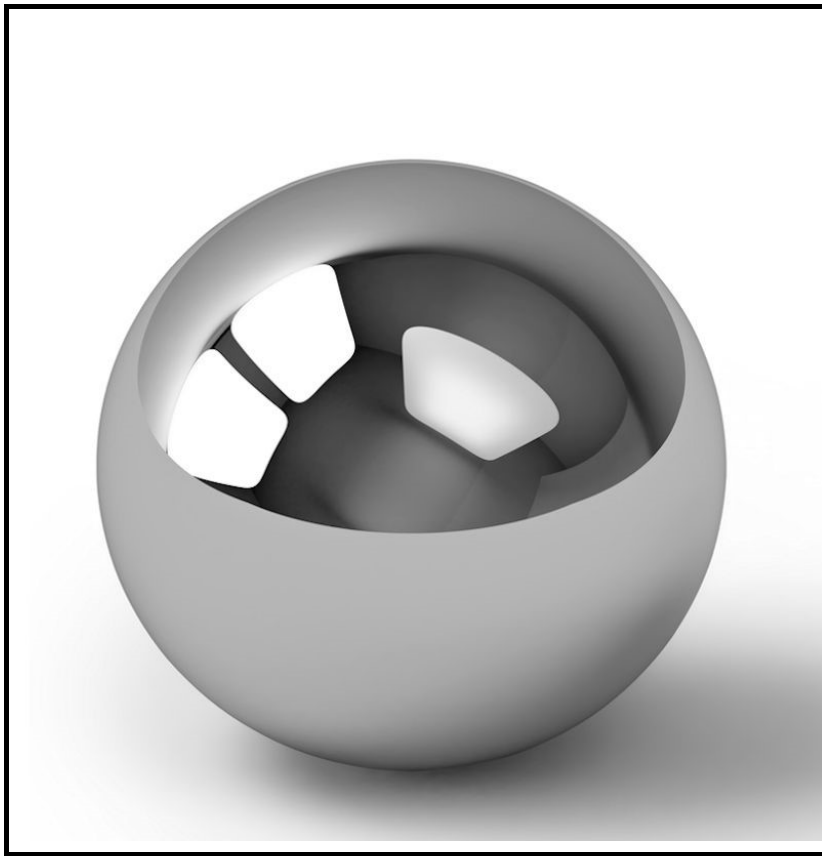


MBA

2018

Balls Range

Precision - Commercial - Steel - Plastic - Rubber



Ceramic 3-4

- Ruby - Sapphire
- Silicon Nitride (Si₃N₄)
- Zirconia (ZrO₂)

Fixture / Checking 4-5

Metallic 5-8

- Bored - Bronze - Chrome Steel
- Stainless Steel - Threaded,
- Titanium - Tungsten Carbide

Plastic 8-11

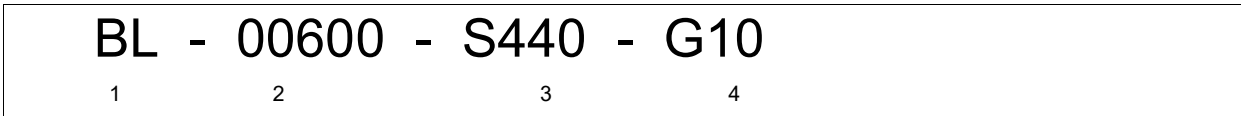
- Bored - Acetal - Acrylic - Nylon
- Polypropylene - PTFE - PVC

Rubber 12

Tooling 13-14

To find and order parts online, simply type the part number from this catalogue into the search box on any web page.

Prefixes and Suffixes



1 Ball:
BL: Code for all balls

2 Diameter:
Shifted 2 decimal places. 00600 is 6mm diameter

3 Material:
AC: Acetal
ACR: Acrylic
CH: Bearing Grade Chrome Steel
NY: Nylon
PB: Phosphor Bronze
PP: Polypropylene
PTF: Polytetrafluoroethylene

PVC: Polyvinyl Chloride
R40D: Santoprene Rubber 40D
R87A: Santoprene Rubber 87A
RY: Synthetic Ruby
S4: AIS 304 Grade Stainless
S440: 440C Bearing Grade Stainless.
S6: AIS 316 Grade Stainless
S6L: AIS 316L Grade Stainless

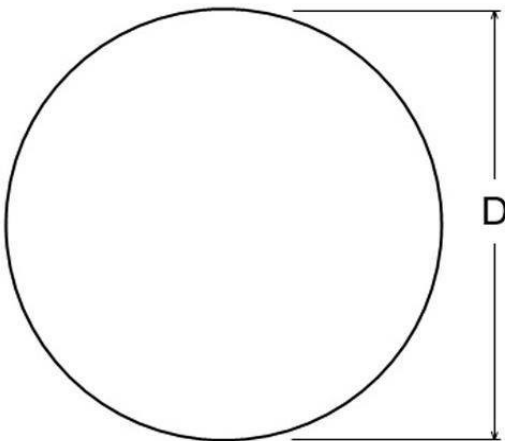
Grade:
4 G10: AFBMA Grade 10

The lower the number the higher the precision of the ball. Refer to our website for a full description of AFBMA ball grading.

These are just some of the most commonly used suffixes. Please refer to MBA for information on suffixes not listed.

Diagrams

Basic Ball



Tooling / Inspection Ball

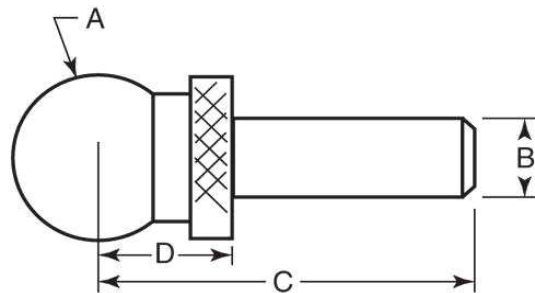
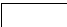



Diagram is for reference only. Not all tooling balls have shoulders. Please refer to the online listings for more comprehensive information.

Ceramic Balls

Diameter (D) mm	Material	Precision Grade	Hardness	Part Number
0.150 (0.006")	Synthetic Sapphire	Grade 25	9 Mohs	BL-00015-SP-G25
0.150 (0.006")	Synthetic Ruby	Grade 25	9 Mohs	BL-00015-RY-G25
0.198 (0.008")	Synthetic Sapphire	Grade 25	9 Mohs	BL-00020-SP-G25
0.198 (0.008")	Synthetic Ruby	Grade 25	9 Mohs	BL-00020-RY-G25
0.300 (0.012")	Synthetic Sapphire	Grade 25	9 Mohs	BL-00030-SP-G25
0.300 (0.012")	Synthetic Ruby	Grade 25	9 Mohs	BL-00030-RY-G25
0.351 (0.014")	Synthetic Sapphire	Grade 25	9 Mohs	BL-00035-SP-G25
0.351 (0.014")	Synthetic Ruby	Grade 25	9 Mohs	BL-00035-RY-G25
0.381 (0.015")	Synthetic Sapphire	Grade 25	9 Mohs	BL-00038-SP-G25
0.381 (0.015")	Synthetic Ruby	Grade 25	9 Mohs	BL-00038-RY-G25
0.397 (0.016")	Synthetic Ruby	Grade 25	9 Mohs	BL-00039-RY-G25
0.397 (0.016")	Synthetic Sapphire	Grade 25	9 Mohs	BL-00039-SP-G25
0.483 (0.019")	Synthetic Ruby	Grade 25	9 Mohs	BL-00048-RY-G25
0.483 (0.019")	Synthetic Sapphire	Grade 25	9 Mohs	BL-00048-SP-G25
0.500 (0.020")	Synthetic Ruby	Grade 25	9 Mohs	BL-00050-RY-G25
0.500 (0.020")	Synthetic Sapphire	Grade 25	9 Mohs	BL-00050-SP-G25
0.599 (0.024")	Synthetic Ruby	Grade 25	9 Mohs	BL-00060-RY-G25
0.599 (0.024")	Synthetic Sapphire	Grade 25	9 Mohs	BL-00060-SP-G25
0.653 (0.026")	Synthetic Ruby	Grade 25	9 Mohs	BL-00065-RY-G25
0.653 (0.026")	Synthetic Sapphire	Grade 25	9 Mohs	BL-00065-SP-G25
0.673 (0.026")	Synthetic Ruby	Grade 25	9 Mohs	BL-00067-RY-G25
0.673 (0.026")	Synthetic Sapphire	Grade 25	9 Mohs	BL-00067-SP-G25
0.794 (0.031")	Synthetic Sapphire	Grade 25	9 Mohs	BL-00079-SP-G25
0.794 (0.031")	Synthetic Ruby	Grade 25	9 Mohs	BL-00079-RY-G25
1.000 (0.039")	Synthetic Ruby	Grade 25	9 Mohs	BL-00100-RY-G25
1.000 (0.039")	Synthetic Sapphire	Grade 25	9 Mohs	BL-00100-SP-G25
1.199 (0.047")	Synthetic Sapphire	Grade 25	9 Mohs	BL-00120-SP-G25
1.199 (0.047")	Synthetic Ruby	Grade 25	9 Mohs	BL-00120-RY-G25
1.501 (0.059")	Synthetic Ruby	Grade 25	9 Mohs	BL-00150-RY-G25
1.501 (0.059")	Synthetic Sapphire	Grade 25	9 Mohs	BL-00150-SP-G25
1.588 (0.063")	Si3N4	Grade 10	1580 kg/mm.sq	BL-00159-SN-G10
1.588 (0.063")	Synthetic Sapphire	Grade 25	9 Mohs	BL-00159-SP-G25
1.588 (0.063")	Synthetic Ruby	Grade 25	9 Mohs	BL-00159-RY-G25
1.999 (0.079")	Synthetic Sapphire	Grade 25	9 Mohs	BL-00200-SP-G25
1.999 (0.079")	Synthetic Ruby	Grade 25	9 Mohs	BL-00200-RY-G25
2.000 (0.079")	ZRO2	Grade 10	1300 kg/mm.sq	BL-00200-ZR-G10
2.381 (0.094")	Si3N4	Grade 10	1580 kg/mm.sq	BL-00238-SN-G10
2.381 (0.094")	Synthetic Sapphire	Grade 25	9 Mohs	BL-00238-SP-G25
2.381 (0.094")	Synthetic Ruby	Grade 25	9 Mohs	BL-00238-RY-G25
2.499 (0.098")	Synthetic Ruby	Grade 25	9 Mohs	BL-00250-RY-G25
2.499 (0.098")	Synthetic Sapphire	Grade 25	9 Mohs	BL-00250-SP-G25
2.500 (0.098")	Si3N4	Grade 10	1580 kg/mm.sq	BL-00250-SN-G10
2.779 (0.109")	Synthetic Ruby	Grade 25	9 Mohs	BL-00278-RY-G25
2.779 (0.109")	Synthetic Sapphire	Grade 25	9 Mohs	BL-00278-SP-G25
3.000 (0.118")	ZRO2	Grade 10	1300 kg/mm.sq	BL-00300-ZR-G10
3.000 (0.118")	Si3N4	Grade 10	1580 kg/mm.sq	BL-00300-SN-G10
3.000 (0.118")	Synthetic Sapphire	Grade 25	9 Mohs	BL-00300-SP-G25
3.000 (0.118")	Synthetic Ruby	Grade 25	9 Mohs	BL-00300-RY-G25
3.175 (0.125")	ZRO2	Grade 25	1300 kg/mm.sq	BL-00318-ZR-G25
3.175 (0.125")	Si3N4	Grade 10	1580 kg/mm.sq	BL-00318-SN-G10
3.175 (0.125")	Synthetic Ruby	Grade 25	9 Mohs	BL-00318-RY-G25
3.175 (0.125")	Synthetic Sapphire	Grade 25	9 Mohs	BL-00318-SP-G25
3.500 (0.138")	Si3N4	Grade 5	1580 kg/mm.sq	BL-00350-SN-G5
3.969 (0.156")	Si3N4	Grade 10	1580 kg/mm.sq	BL-00397-SN-G10
3.969 (0.156")	Synthetic Ruby	Grade 25	9 Mohs	BL-00397-RY-G25
3.969 (0.156")	Synthetic Sapphire	Grade 25	9 Mohs	BL-00397-SP-G25
4.000 (0.157")	ZRO2	Grade 10	1300 kg/mm.sq	BL-00400-ZR-G10

 Stocked or Short Delivery

 Usually Available Short Delivery

 Long delivery or not in current production

Ceramic Balls

Diameter (D) mm	Material	Precision Grade	Hardness	Part Number
4.000 (0.157")	Si3N4	Grade 10	1580 kg/mm.sq	BL-00400-SN-G10
4.000 (0.157")	Synthetic Ruby	Grade 25	9 Mohs	BL-00400-RY-G25
4.000 (0.157")	Synthetic Sapphire	Grade 25	9 Mohs	BL-00400-SP-G25
4.762 (0.187")	Si3N4	Grade 5	1580 kg/mm.sq	BL-00476-SN-G5
4.763 (0.188")	ZRO2	Grade 25	1300 kg/mm.sq	BL-00476-ZR-G25
4.763 (0.188")	Si3N4	Grade 10	1580 kg/mm.sq	BL-00476-SN-G10
4.763 (0.188")	Synthetic Ruby	Grade 25	9 Mohs	BL-00476-RY-G25
4.763 (0.188")	Synthetic Sapphire	Grade 25	9 Mohs	BL-00476-SP-G25
5.000 (0.197")	Si3N4	Grade 10	1580 kg/mm.sq	BL-00500-SN-G10
5.000 (0.197")	Synthetic Ruby	Grade 25	9 Mohs	BL-00500-RY-G25
5.000 (0.197")	Synthetic Sapphire	Grade 25	9 Mohs	BL-00500-SP-G25
5.556 (0.219")	Synthetic Sapphire	Grade 25	9 Mohs	BL-00556-SP-G25
5.556 (0.219")	Synthetic Ruby	Grade 25	9 Mohs	BL-00556-RY-G25
6.000 (0.236")	Si3N4	Grade 10	1580 kg/mm.sq	BL-00600-SN-G10
6.000 (0.236")	Synthetic Sapphire	Grade 25	9 Mohs	BL-00600-SP-G25
6.000 (0.236")	Synthetic Ruby	Grade 25	9 Mohs	BL-00600-RY-G25
6.350 (0.250")	ZRO2	Grade 25	1300 kg/mm.sq	BL-00635-ZR-G25
6.350 (0.250")	Si3N4	Grade 10	1580 kg/mm.sq	BL-00635-SN-G10
6.350 (0.250")	Synthetic Sapphire	Grade 25	9 Mohs	BL-00635-SP-G25
6.350 (0.250")	Synthetic Ruby	Grade 25	9 Mohs	BL-00635-RY-G25
7.938 (0.313")	Si3N4	Grade 10	1580 kg/mm.sq	BL-00794-SN-G10
7.938 (0.313")	Synthetic Ruby	Grade 25	9 Mohs	BL-00794-RY-G25
7.938 (0.313")	Synthetic Sapphire	Grade 25	9 Mohs	BL-00794-SP-G25
8.000 (0.315")	Si3N4	Grade 10	1580 kg/mm.sq	BL-00800-SN-G10
9.525 (0.375")	ZRO2	Grade 25	1300 kg/mm.sq	BL-00953-ZR-G25
9.525 (0.375")	Si3N4	Grade 25	1580 kg/mm.sq	BL-00953-SN-G25
9.525 (0.375")	Synthetic Sapphire	Grade 25	9 Mohs	BL-00953-SP-G25
9.525 (0.375")	Synthetic Ruby	Grade 25	9 Mohs	BL-00953-RY-G25
10.000 (0.394")	ZRO2	Grade 25	1300 kg/mm.sq	BL-01000-ZR-G25
10.000 (0.394")	Si3N4	Grade 25	1580 kg/mm.sq	BL-01000-SN-G25
10.318 (0.406")	Si3N4	Grade 25	1580 kg/mm.sq	BL-01032-SN-G25
12.000 (0.472")	Si3N4	Grade 10	1580 kg/mm.sq	BL-01200-SN-G10
12.700 (0.500")	ZRO2	Grade 25	1300 kg/mm.sq	BL-01270-ZR-G25
12.700 (0.500")	Si3N4	Grade 10	1580 kg/mm.sq	BL-01270-SN-G10
12.700 (0.500")	Si3N4	Grade 5	1580 kg/mm.sq	BL-01270-SN-G5
15.081 (0.594")	Si3N4	Grade 10	1580 kg/mm.sq	BL-01508-SN-G10
15.875 (0.625")	ZRO2	Grade 10	1300 kg/mm.sq	BL-01588-ZR-G10
15.875 (0.625")	Si3N4	Grade 10	1580 kg/mm.sq	BL-01588-SN-G10
17.463 (0.688")	Si3N4	Grade 25	1580 kg/mm.sq	BL-01746-SN-G25
19.050 (0.750")	ZRO2	Grade 25	1300 kg/mm.sq	BL-01905-ZR-G25
19.050 (0.750")	Si3N4	Grade 10	1580 kg/mm.sq	BL-01905-SN-G10

Fixture and Checking Balls

Diameter (A) mm	Shank Diameter (D) mm	Base to Centre (B) mm	Shoulder to Centre (C) mm	Part Number
3.175 (0.125")	3.188	9.525	2.383	Stainless Steel BCHK-00318-S440
6.350 (0.250")	3.167	14.224		Tungsten Carbide BFX-00635-TC
6.350 (0.250")	3.167	14.224	3.167	Stainless Steel BFX-00635-S440
6.350 (0.250")	3.167	14.224	5.080	Tungsten Carbide BCHK-00635-TC
6.350 (0.250")	3.167	14.224	5.080	Stainless Steel BCHK-00635-S440
6.350 (0.250")	3.167	14.732	5.080	Carbon Steel BIN-00635-HS-SOL
9.525 (0.375")	4.755	18.796	7.620	Carbon Steel BIN-00953-HS-SOL
9.525 (0.375")	4.755	19.050		Tungsten Carbide BFX-00953-TC
9.525 (0.375")	4.755	19.050	4.755	Stainless Steel BFX-00953-S440
9.525 (0.375")	4.755	19.050	7.620	Stainless Steel BCHK-00953-S440
9.525 (0.375")	4.755	19.050	7.620	Tungsten Carbide BCHK-00953-TC

Stocked or Short Delivery

Usually Available Short Delivery

Long delivery or not in current production

Fixture and Checking Balls

Diameter (A) mm	Shank Diameter (D) mm	Base to Centre (B) mm	Shoulder to Centre (C) mm	Material	Part Number
9.525 (0.375")	7.938	18.796	7.620	Carbon Steel	BIN-00953-HS
12.700 (0.500")	6.342	16.002	7.938	Carbon Steel	BIN-01270-HS-A
12.700 (0.500")	6.342	22.352	12.700	Carbon Steel	BIN-01270-HS-B
12.700 (0.500")	6.342	23.622	10.160	Carbon Steel	BIN-01270-HS-C
12.700 (0.500")	6.342	23.876	10.160	Stainless Steel	BCHK-01270-S440
12.700 (0.500")	6.342	23.876	10.160	Tungsten Carbide	BCHK-01270-TC
12.700 (0.500")	6.342	23.876	6.342	Stainless Steel	BFX-01270-S440
12.700 (0.500")	6.350	24.384	7.938	Stainless Steel	BCHK-01270-S440T
12.700 (0.500")	9.525	33.274	9.525	Carbon Steel	BIN-01270-HS-D
15.875 (0.625")	7.930	26.924	11.430	Stainless Steel	BCHK-01588-S440
15.875 (0.625")	7.930	26.924	7.930	Stainless Steel	BFX-01588-S440
15.875 (0.625")	7.930	27.432	11.430	Carbon Steel	BIN-01588-HS-A
15.875 (0.625")	9.525	36.068	11.430	Carbon Steel	BIN-01588-HS-B
19.050 (0.750")	9.517	31.750	12.700	Tungsten Carbide	BCHK-01905-TC
19.050 (0.750")	9.517	31.750	12.700	Stainless Steel	BCHK-01905-S440
19.050 (0.750")	9.517	31.750	9.517	Stainless Steel	BFX-01905-S440
19.050 (0.750")	9.525	38.862	14.288	Carbon Steel	BIN-01905-HS
22.225 (0.875")	11.105	36.576	15.240	Stainless Steel	BCHK-02223-S440
25.400 (1.000")	12.692	41.148	12.692	Stainless Steel	BFX-02540-S440
25.400 (1.000")	12.692	41.148	17.780	Stainless Steel	BCHK-02540-S440
25.400 (1.000")	12.700	41.656	17.780	Carbon Steel	BIN-02540-HS

Metallic Balls

Diameter (D) mm	Material	Precision Grade	Hardness	Part Number
0.200 (0.008")	440C Stainless	Grade 3	55-60 Rockwell C	BL-00020-S440-G3
0.250 (0.010")	440C Stainless	Grade 3	55-60 Rockwell C	BL-00025-S440-G3
0.397 (0.016")	SAE52100 Chrome	Grade 3	60-70 Rockwell C	BL-00039-CH-G3
0.397 (0.016")	440C Stainless	Grade 3	55-60 Rockwell C	BL-00039-S440-G3
0.400 (0.016")	SAE52100 Chrome	Grade 28	60-70 Rockwell C	BL-00040-CH-G28
0.500 (0.020")	Tungsten Carbide	Grade 25	91.5 Rockwell A	BL-00050-TC-G25
0.500 (0.020")	440C Stainless	Grade 3	55-60 Rockwell C	BL-00050-S440-G3
0.600 (0.024")	440C Stainless	Grade 3	55-60 Rockwell C	BL-00060-S440-G3
0.650 (0.026")	440C Stainless	Grade 3	55-60 Rockwell C	BL-00065-S440-G3
0.700 (0.028")	SAE52100 Chrome	Grade 28	60-70 Rockwell C	BL-00070-CH-G28
0.794 (0.031")	440C Stainless	Grade 3	55-60 Rockwell C	BL-00079-S440-G3
1.000 (0.039")	SAE52100 Chrome	Grade 16	60-70 Rockwell C	BL-00100-CH-G16
1.000 (0.039")	Tungsten Carbide	Grade 25	91.5 Rockwell A	BL-00100-TC-G25
1.000 (0.039")	440C Stainless	Grade 3	55-60 Rockwell C	BL-00100-S440-G3
1.000 (0.039")	440C Stainless	Grade 10	55-60 Rockwell C	BL-00100-S440-G10
1.150 (0.045")	440C Stainless	Grade 3	55-60 Rockwell C	BL-00115-S440-G3
1.191 (0.047")	SAE52100 Chrome	Grade 3	60-70 Rockwell C	BL-00119-CH-G3
1.191 (0.047")	440C Stainless	Grade 3	55-60 Rockwell C	BL-00119-S440-G3
1.200 (0.047")	SAE52100 Chrome	Grade 28	60-70 Rockwell C	BL-00120-CH-G28
1.250 (0.049")	440C Stainless	Grade 3	55-60 Rockwell C	BL-00125-S440-G3
1.450 (0.057")	440C Stainless	Grade 3	55-60 Rockwell C	BL-00145-S440-G3
1.500 (0.059")	SAE52100 Chrome	Grade 2000	60-70 Rockwell C	BL-00150-CH-G2000-1KG
1.500 (0.059")	SAE52100 Chrome	Grade 28	60-70 Rockwell C	BL-00150-CH-G28
1.500 (0.059")	440C Stainless	Grade 10	55-60 Rockwell C	BL-00150-S440-G10
1.500 (0.059")	440C Stainless	Grade 3	55-60 Rockwell C	BL-00150-S440-G3
1.588 (0.063")	SAE52100 Chrome	Grade 25	60-70 Rockwell C	BL-00159-CH-G25
1.588 (0.063")	304 Stainless	Grade 100	25-39 Rockwell C	BL-00159-S4-G100
1.588 (0.063")	316 Stainless	Grade 100	25-39 Rockwell C	BL-00159-S6-G100
1.588 (0.063")	440C Stainless	Grade 10	55-60 Rockwell C	BL-00159-S440-G10
1.588 (0.063")	440C Stainless	Grade 3	55-60 Rockwell C	BL-00159-S440-G3
1.750 (0.069")	440C Stainless	Grade 3	55-60 Rockwell C	BL-00175-S440-G3

Stocked or Short Delivery

Usually Available Short Delivery

Long delivery or not in current production

Metallic Balls

Diameter (D) mm	Material	Precision Grade	Hardness	Part Number
1.915 (0.075")	440C Stainless	Grade 3	55-60 Rockwell C	BL-00192-S440-G3
2.000 (0.079")	SAE52100 Chrome	Grade 10	60-70 Rockwell C	BL-00200-CH-G10
2.000 (0.079")	Tungsten Carbide - 6% Nickel Binder	Grade 25	91.5 Rockwell A	BL-00200-TC-G25
2.000 (0.079")	304 Stainless	Grade 100	25-39 Rockwell C	BL-00200-S4-G100
2.000 (0.079")	316 Stainless	Grade 100	25-39 Rockwell C	BL-00200-S6-G100
2.000 (0.079")	316 Stainless	Grade 100	25-39 Rockwell C	BL-00200-S6-G100-B
2.000 (0.079")	316 Stainless	Grade 400	25-39 Rockwell C	BL-00200-S6-G400-B
2.000 (0.079")	440C Stainless	Grade 3	55-60 Rockwell C	BL-00200-S440-G3
2.100 (0.083")	440C Stainless	Grade 3	55-60 Rockwell C	BL-00210-S440-G3
2.381 (0.094")	SAE52100 Chrome	Grade 25	60-70 Rockwell C	BL-00238-CH-G25
2.381 (0.094")	Tungsten Carbide	Grade 25	91.5 Rockwell A	BL-00238-TC-G25
2.381 (0.094")	304 Stainless	Grade 100	25-39 Rockwell C	BL-00238-S4-G100
2.381 (0.094")	316 Stainless	Grade 200	25-39 Rockwell C	BL-00238-S6-G200
2.381 (0.094")	440C Stainless	Grade 28	55-60 Rockwell C	BL-00238-S440-G28
2.381 (0.094")	440C Stainless	Grade 3	55-60 Rockwell C	BL-00238-S440-G3
2.381 (0.094")	440C Stainless	Grade 50	55-60 Rockwell C	BL-00238-S440-G50
2.450 (0.096")	SAE52100 Chrome	Grade 3	60-70 Rockwell C	BL-00245-CH-G3
2.450 (0.096")	440C Stainless	Grade 3	55-60 Rockwell C	BL-00245-S440-G3
2.500 (0.098")	SAE52100 Chrome	Grade 28	60-70 Rockwell C	BL-00250-CH-G28
2.500 (0.098")	440C Stainless	Grade 10	55-60 Rockwell C	BL-00250-S440-G10
2.500 (0.098")	440C Stainless	Grade 40	55-60 Rockwell C	BL-00250-S440-G40
2.500 (0.098")	440C Stainless	Grade 3	55-60 Rockwell C	BL-00250-S440-G3
2.778 (0.109")	440C Stainless	Grade 3	55-60 Rockwell C	BL-00278-S440-G3
2.778 (0.109")	440C Stainless	Grade 40	55-60 Rockwell C	BL-00278-S440-G40
3.000 (0.118")	SAE52100 Chrome	Grade 28	60-70 Rockwell C	BL-00300-CH-G28
3.000 (0.118")	Tungsten Carbide	Grade 25	91.5 Rockwell A	BL-00300-TC-G25
3.000 (0.118")	Ti-Gr23/Ti-6AL4V-ELI	Grade 100	35 Rockwell C	BL-00300-T23-G100
3.000 (0.118")	304 Stainless	Grade 200	25-39 Rockwell C	BL-00300-S4-G200
3.000 (0.118")	316 Stainless	Grade 200	25-39 Rockwell C	BL-00300-S6-G200
3.000 (0.118")	440C Stainless	Grade 16	55-60 Rockwell C	BL-00300-S440-G16
3.175 (0.125")	SAE52100 Chrome	Grade 25	60-70 Rockwell C	BL-00318-CH-G25
3.175 (0.125")	Tungsten Carbide	Grade 25	91.5 Rockwell A	BL-00318-TC-G25
3.175 (0.125")	Phosphor Bronze	Grade 1000	75-98 Rockwell B	BL-00318-PB-G1000
3.175 (0.125")	304 Stainless	Grade 100	25-39 Rockwell C	BL-00318-S4-G100
3.175 (0.125")	316 Stainless	Grade 100	25-39 Rockwell C	BL-00318-S6-G100
3.175 (0.125")	420 Stainless	Grade 20	55-60 Rockwell C	BL-00318-S420-G28
3.175 (0.125")	440C Stainless	Grade 20	55-60 Rockwell C	BL-00318-S440-G20
3.400 (0.134")	SAE52100 Chrome	Grade 25	60-70 Rockwell C	BL-00340-CH-G25
3.500 (0.138")	SAE52100 Chrome	Grade 28	60-70 Rockwell C	BL-00350-CH-G28
3.500 (0.138")	440C Stainless	Grade 28	55-60 Rockwell C	BL-00350-S440-G28
3.969 (0.156")	Tungsten Carbide	Grade 24	91.5 Rockwell A	BL-00397-TC-G24
3.969 (0.156")	SAE52100 Chrome	Grade 25	60-70 Rockwell C	BL-00397-CH-G25
3.969 (0.156")	304 Stainless	Grade 100	25-39 Rockwell C	BL-00397-S4-G100
3.969 (0.156")	316 Stainless	Grade 100	25-39 Rockwell C	BL-00397-S6-G100
3.969 (0.156")	440C Stainless	Grade 50	55-60 Rockwell C	BL-00397-S440-G50
4.000 (0.157")	SAE52100 Chrome	Grade 100	60-70 Rockwell C	BL-00400-CH-G100
4.000 (0.157")	SAE52100 Chrome	Grade 28	60-70 Rockwell C	BL-00400-CH-G28
4.000 (0.157")	Tungsten Carbide	Grade 25	91.5 Rockwell A	BL-00400-TC-G25
4.000 (0.157")	Ti-Gr23/Ti-6AL4V-ELI	Grade 100	35 Rockwell C	BL-00400-T23-G100
4.000 (0.157")	304 Stainless	Grade 100	25-39 Rockwell C	BL-00400-S4-G100
4.000 (0.157")	316 Stainless	Grade 200	25-39 Rockwell C	BL-00400-S6-G200
4.000 (0.157")	316 Stainless	Grade 100	25-39 Rockwell C	BL-00400-S6-G100
4.000 (0.157")	316L Stainless	Grade 100	25-39 Rockwell C	BL-00400-S6L-G100
4.000 (0.157")	440C Stainless	Grade 16	55-60 Rockwell C	BL-00400-S440-G16
4.500 (0.177")	SAE52100 Chrome	Grade 28	60-70 Rockwell C	BL-00450-CH-G28
4.762 (0.187")	Phosphor Bronze	Grade 1000	75-98 Rockwell B	BL-00476-PB-G1000

Stocked or Short Delivery

Usually Available Short Delivery

Long delivery or not in current production

Metallic Balls

Diameter (D) mm	Material	Precision Grade	Hardness	Part Number
4.763 (0.188")	SAE52100 Chrome	Grade 25	60-70 Rockwell C	BL-00476-CH-G25
4.763 (0.188")	SAE52100 Chrome	Grade 20	60-70 Rockwell C	BL-00476-CH-G20
4.763 (0.188")	Tungsten Carbide	Grade 25	91.5 Rockwell A	BL-00476-TC-G25
4.763 (0.188")	304 Stainless	Grade 100	25-39 Rockwell C	BL-00476-S4-G100
4.763 (0.188")	316 Stainless	Grade 200	25-39 Rockwell C	BL-00476-S6-G200
4.763 (0.188")	440C Stainless	Grade 28	55-60 Rockwell C	BL-00476-S440-G28
4.763 (0.188")	440C Stainless	Grade 50	55-60 Rockwell C	BL-00476-S440-G50
5.000 (0.197")	SAE52100 Chrome	Grade 3	60-70 Rockwell C	BL-00500-CH-G3
5.000 (0.197")	SAE52100 Chrome	Grade 28	60-70 Rockwell C	BL-00500-CH-G28
5.000 (0.197")	Ti-Gr23/Ti-6AL4V-ELI	Grade 100	35 Rockwell C	BL-00500-T23-G100
5.000 (0.197")	304 Stainless	Grade 100	25-39 Rockwell C	BL-00500-S4-G100
5.000 (0.197")	316 Stainless	Grade 200	25-39 Rockwell C	BL-00500-S6-G200
5.000 (0.197")	440C Stainless	Grade 16	55-60 Rockwell C	BL-00500-S440-G16
5.500 (0.217")	SAE52100 Chrome	Grade 28	60-70 Rockwell C	BL-00550-CH-G28
5.556 (0.219")	SAE52100 Chrome	Grade 28	60-70 Rockwell C	BL-00556-CH-G28
5.556 (0.219")	SAE52100 Chrome	Grade 25	60-70 Rockwell C	BL-00556-CH-G25
5.556 (0.219")	304 Stainless	Grade 100	25-39 Rockwell C	BL-00556-S4-G100
5.556 (0.219")	316 Stainless	Grade 100	25-39 Rockwell C	BL-00556-S6-G100
5.556 (0.219")	440C Stainless	Grade 10	55-60 Rockwell C	BL-00556-S440-G40
6.000 (0.236")	SAE52100 Chrome	Grade 200	60-70 Rockwell C	BL-00600-CH-G200
6.000 (0.236")	Ti-Gr23/Ti-6AL4V-ELI	Grade 100	35 Rockwell C	BL-00600-T23-G100
6.000 (0.236")	440C Stainless	Grade 16	55-60 Rockwell C	BL-00600-S440-G16
6.000 (0.236")	440C Stainless	Grade 40	55-60 Rockwell C	BL-00600-S440-G40
6.350 (0.250")	SAE52100 Chrome	Grade 20	60-70 Rockwell C	BL-00635-CH-G20
6.350 (0.250")	SAE52100 Chrome	Grade 25	60-70 Rockwell C	BL-00635-CH-G25
6.350 (0.250")	Tungsten Carbide	Grade 25	91.5 Rockwell A	BL-00635-TC-G25
6.350 (0.250")	Phosphor Bronze	Grade 1000	75-98 Rockwell B	BL-00635-PB-G1000
6.350 (0.250")	304 Stainless	Grade 100	25-39 Rockwell C	BL-00635-S4-G100
6.350 (0.250")	316 Stainless	Grade 100	25-39 Rockwell C	BL-00635-S6-G100
6.350 (0.250")	440C Stainless	Grade 28	55-60 Rockwell C	BL-00635-S440-G28
6.500 (0.256")	SAE52100 Chrome	Grade 28	60-70 Rockwell C	BL-00650-CH-G28
7.000 (0.276")	SAE52100 Chrome	Grade 40	60-70 Rockwell C	BL-00700-CH-G40
7.000 (0.276")	440C Stainless	Grade 16	55-60 Rockwell C	BL-00700-S440-G16
7.144 (0.281")	SAE52100 Chrome	Grade 28	60-70 Rockwell C	BL-00714-CH-G28
7.144 (0.281")	304 Stainless	Grade 100	25-39 Rockwell C	BL-00714-S4-G100
7.144 (0.281")	440C Stainless	Grade 28	55-60 Rockwell C	BL-00714-S440-G28
7.500 (0.295")	SAE52100 Chrome	Grade 28	60-70 Rockwell C	BL-00750-CH-G28
7.938 (0.313")	SAE52100 Chrome	Grade 28	60-70 Rockwell C	BL-00794-CH-G28
7.938 (0.313")	SAE52100 Chrome	Grade 25	60-70 Rockwell C	BL-00794-CH-G25
7.938 (0.313")	Phosphor Bronze	Grade 1000	75-98 Rockwell B	BL-00794-PB-G1000
7.938 (0.313")	304 Stainless	Grade 200	25-39 Rockwell C	BL-00794-S4-G200
7.938 (0.313")	316 Stainless	Grade 200	25-39 Rockwell C	BL-00794-S6-G200
7.938 (0.313")	440C Stainless	Grade 28	55-60 Rockwell C	BL-00794-S440-G28
8.000 (0.315")	Ti-Gr23/Ti-6AL4V-ELI	Grade 100	35 Rockwell C	BL-00800-T23-G100
8.500 (0.335")	SAE52100 Chrome	Grade 28	60-70 Rockwell C	BL-00850-CH-G28
8.731 (0.344")	SAE52100 Chrome	Grade 28	60-70 Rockwell C	BL-00873-CH-G28
8.731 (0.344")	304 Stainless	Grade 200	25-39 Rockwell C	BL-00873-S4-G200
9.000 (0.354")	SAE52100 Chrome	Grade 28	60-70 Rockwell C	BL-00900-CH-G28
9.000 (0.354")	440C Stainless	Grade 28	55-60 Rockwell C	BL-00900-S440-G28
9.525 (0.375")	SAE52100 Chrome	Grade 25	60-70 Rockwell C	BL-00953-CH-G25
9.525 (0.375")	Tungsten Carbide	Grade 25	91.5 Rockwell A	BL-00953-TC-G25
9.525 (0.375")	304 Stainless	Grade 100	25-39 Rockwell C	BL-00953-S4-G100
9.525 (0.375")	316 Stainless	Grade 100	25-39 Rockwell C	BL-00953-S6-G100
9.525 (0.375")	440C Stainless	Grade 20	55-60 Rockwell C	BL-00953-S440-G20
9.525 (0.375")	440C Stainless	Grade 40	55-60 Rockwell C	BL-00953-S440-G40
10.000 (0.394")	SAE52100 Chrome	Grade 40	60-70 Rockwell C	BL-01000-CH-G40
10.000 (0.394")	Tungsten Carbide	Grade 25	91.5 Rockwell A	BL-01000-TC-G25



Stocked or Short Delivery



Usually Available Short Delivery



Long delivery or not in current production

Metallic Balls

Diameter (D) mm	Material	Precision Grade	Hardness	Part Number
10.000 (0.394")	316 Stainless	Grade 200	25-39 Rockwell C	BL-01000-S6-G200
10.319 (0.406")	SAE52100 Chrome	Grade 28	60-70 Rockwell C	BL-01032-CH-G28
11.000 (0.433")	SAE52100 Chrome	Grade 28	60-70 Rockwell C	BL-01100-CH-G28
11.000 (0.433")	440C Stainless	Grade 16	55-60 Rockwell C	BL-01100-S440-G16
11.112 (0.437")	SAE52100 Chrome	Grade 28	60-70 Rockwell C	BL-01111-CH-G28
11.113 (0.438")	316 Stainless	Grade 200	25-39 Rockwell C	BL-01111-S6-G200
11.500 (0.453")	SAE52100 Chrome	Grade 28	60-70 Rockwell C	BL-01150-CH-G28
11.906 (0.469")	SAE52100 Chrome	Grade 50	60-70 Rockwell C	BL-01191-CH-G50
12.000 (0.472")	SAE52100 Chrome	Grade 28	60-70 Rockwell C	BL-01200-CH-G28
12.000 (0.472")	440C Stainless	Grade 16	55-60 Rockwell C	BL-01200-S440-G16
12.500 (0.492")	SAE52100 Chrome	Grade 28	60-70 Rockwell C	BL-01250-CH-G28
12.700 (0.500")	SAE52100 Chrome	Grade 25	60-70 Rockwell C	BL-01270-CH-G25
12.700 (0.500")	Phosphor Bronze	Grade 1000	75-98 Rockwell B	BL-01270-PB-G1000
12.700 (0.500")	304 Stainless	Grade 100	25-39 Rockwell C	BL-01270-S4-G100
12.700 (0.500")	316 Stainless	Grade 100	25-39 Rockwell C	BL-01270-S6-G100
12.700 (0.500")	316L Grade Stainless	Grade 100	25-39 Rockwell C	BL-01270-S6L-G100
12.700 (0.500")	440C Stainless	Grade 50	55-60 Rockwell C	BL-01270-S440-G50
12.700 (0.500")	440C Stainless	Grade 16	55-60 Rockwell C	BL-01270-S440-G16
14.288 (0.563")	304 Stainless	Grade 200	25-39 Rockwell C	BL-01429-S4-G200
15.000 (0.591")	SAE52100 Chrome	Grade 28	60-70 Rockwell C	BL-01500-CH-G28
15.000 (0.591")	316 Stainless	Grade 100	25-39 Rockwell C	BL-01500-S6-G100
15.88 (0.625")	SAE52100 Chrome	Grade 40	60-70 Rockwell C	BL-01588-CH-G40
15.875 (0.625")	304 Stainless	Grade 100	25-39 Rockwell C	BL-01588-S4-G100
15.875 (0.625")	316 Stainless	Grade 100	25-39 Rockwell C	BL-01588-S6-G100
17.463 (0.688")	304 Stainless	Grade 100	25-39 Rockwell C	BL-01746-S4-G100
19.050 (0.750")	Tungsten Carbide	Grade 25	91.5 Rockwell A	BL-01905-TC-G25
19.050 (0.750")	304 Stainless	Grade 100	25-39 Rockwell C	BL-01905-S4-G100
19.050 (0.750")	316 Stainless	Grade 200	25-39 Rockwell C	BL-01905-S6-G200
20.000 (0.787")	316 Stainless	Grade 200	25-39 Rockwell C	BL-02000-S6-G200
22.000 (0.866")	SAE52100 Chrome	Grade 40	60-70 Rockwell C	BL-02200-CH-G40
22.225 (0.875")	SAE52100 Chrome	Grade 40	60-70 Rockwell C	BL-02223-CH-G40
22.225 (0.875")	304 Stainless	Grade 100	25-39 Rockwell C	BL-02223-S4-G100
22.225 (0.875")	Tungsten Carbide	Grade 25	91.5 Rockwell A	BL-02223-TC-G25
25.000 (0.984")	AISI 420 Stainless	Grade 40	55-60 Rockwell C	BL-02500-S420-G40
25.400 (1.000")	304 Stainless	Grade 100	25-39 Rockwell C	BL-02540-S4-G100
25.400 (1.000")	316 Stainless	Grade 100	25-39 Rockwell C	BL-02540-S6-G100
26.988 (1.063")	SAE52100 Chrome	Grade 40	60-70 Rockwell C	BL-02699-CH-G40
31.750 (1.250")	304 Stainless	Grade 200	25-39 Rockwell C	BL-03175-S4-G200
35.000 (1.378")	SAE52100 Chrome	Grade 40	60-70 Rockwell C	BL-03500-CH-G40
38.100 (1.500")	SAE52100 Chrome	Grade 50	60-70 Rockwell C	BL-03810-CH-G50
38.100 (1.500")	Tungsten Carbide	Grade 25	91.5 Rockwell A	BL-03810-TC-G25
44.450 (1.750")	SAE52100 Chrome	Grade 50	60-70 Rockwell C	BL-04445-CH-G50
44.450 (1.750")	316 Stainless	Grade 200	25-39 Rockwell C	BL-04445-S6-G200
44.450 (1.750")	440C Stainless	Grade 50	55-60 Rockwell C	BL-04445-S440-G50
50.000 (1.969")	SAE52100 Chrome	Grade 40	60-70 Rockwell C	BL-05000-CH-G40
69.85 (2.750")	AISI 440C Stainless	Grade 200	55-60 Rockwell C	BL-06985-S440-G200
100.00 (3.937")	SAE52100 Chrome	Grade 200	60-70 Rockwell C	BL-10000-CH-G200

Metallic Balls - Bored

Diameter (D) mm	Bore (B) mm	Width (W) mm	Flat Diameter (d1) mm	Part Number
7.938 (0.313")	3.000	6.000	5.100	Chrome Steel BLB-00794-00300-SUJ
9.525 (0.375")	4.000	7.000	7.400	Chrome Steel BLB-00953-00400-SUJ
11.112 (0.437")	5.000	8.000	7.710	Chrome Steel BLB-01111-00500-SUJ
12.700 (0.500")	6.000	9.000	8.960	Chrome Steel BLB-01270-00600-SUJ
15.875 (0.625")	8.000	12.000	10.390	Chrome Steel BLB-01588-00800-SUJ
19.050 (0.750")	10.000	14.000	12.920	Chrome Steel BLB-01905-01000-SUJ

Stocked or Short Delivery

Usually Available Short Delivery

Long delivery or not in current production

Metallic Balls - Bored

Diameter (D) mm	Bore (B) mm	Width (W) mm	Flat Diameter (d1) mm	Part Number
22.225 (0.875")	12.000	16.000	15.430	Chrome Steel BLB-02223-01200-SUJ
25.400 (1.000")	14.000	19.000	16.860	Chrome Steel BLB-02540-01400-SUJ
28.575 (1.125")	16.000	21.000	19.390	Chrome Steel BLB-02858-01600-SUJ
31.750 (1.250")	18.000	23.000	21.890	Chrome Steel BLB-03175-01800-SUJ
34.925 (1.375")	20.000	25.000	24.380	Chrome Steel BLB-03493-02000-SUJ
38.100 (1.500")	22.000	28.000	25.840	Chrome Steel BLB-03810-02200-SUJ
42.863 (1.688")	25.000	31.000	29.600	Chrome Steel BLB-04286-02500-SUJ
50.800 (2.000")	30.000	37.000	34.810	Chrome Steel BLB-05080-03000-SUJ

Plastic Balls

Diameter (D) mm	Material	Precision Grade	Hardness	Part Number
0.79 (0.031")	Acrylic	Commercial	132 Rockwell R	BL-00079-ACR
0.79 (0.031")	PTFE	Commercial	68 Rockwell R	BL-00079-PTF
1.59 (0.063")	Nylon (Polyamide 6/6)	Commercial	108 Rockwell R	BL-00159-NY
1.59 (0.063")	Acrylic	Commercial	132 Rockwell R	BL-00159-ACR
1.59 (0.063")	PTFE	Commercial	68 Rockwell R	BL-00159-PTF
2.38 (0.094")	PTFE	Commercial	68 Rockwell R	BL-00238-PTF
2.38 (0.094")	Nylon (Polyamide 6/6)	Commercial	108 Rockwell R	BL-00238-NY
2.38 (0.094")	Acetal	Commercial	118 Rockwell R	BL-00238-AC
3.00 (0.118")	Acrylic	Commercial	132 Rockwell R	BL-00300-ACR
3.18 (0.125")	Nylon (Polyamide 6/6)	Commercial	108 Rockwell R	BL-00318-NY
3.18 (0.125")	Acetal	Commercial	118 Rockwell R	BL-00318-AC
3.18 (0.125")	Acrylic	Commercial	132 Rockwell R	BL-00318-ACR
3.18 (0.125")	PTFE	Commercial	68 Rockwell R	BL-00318-PTF
3.18 (0.125")	Torlon (Polyamide-imide)	Bearing Grade	Rockwell E86 or M109-119	BL-00318-TO
3.18 (0.125")	Polypropylene	Commercial	86 Rockwell R	BL-00318-PP
3.97 (0.156")	Nylon (Polyamide 6/6)	Commercial	108 Rockwell R	BL-00397-NY
3.97 (0.156")	Acetal	Commercial	118 Rockwell R	BL-00397-AC
3.97 (0.156")	Acrylic	Commercial	132 Rockwell R	BL-00397-ACR
3.97 (0.156")	PTFE	Commercial	68 Rockwell R	BL-00397-PTF
3.97 (0.156")	Torlon (Polyamide-imide)	Bearing Grade	Rockwell E86 or M109-119	BL-00397-TO
3.97 (0.156")	Polypropylene	Commercial	86 Rockwell R	BL-00397-PP
4.76 (0.187")	PVC	Grade 2	114 Rockwell R	BL-00476-PVC
4.76 (0.187")	Polypropylene	Commercial	86 Rockwell R	BL-00476-PP
4.76 (0.187")	Torlon (Polyamide-imide)	Bearing Grade	Rockwell E86 or M109-119	BL-00476-TO
4.76 (0.188")	Nylon (Polyamide 6/6)	Commercial	108 Rockwell R	BL-00476-NY
4.76 (0.188")	Acetal	Commercial	118 Rockwell R	BL-00476-AC
4.76 (0.188")	Acrylic	Commercial	132 Rockwell R	BL-00476-ACR
4.76 (0.188")	PTFE	Commercial	68 Rockwell R	BL-00476-PTF
5.00 (0.197")	Torlon (Polyamide-imide)	Bearing Grade	Rockwell E86 or M109-119	BL-00500-TO
5.56 (0.219")	Nylon (Polyamide 6/6)	Commercial	108 Rockwell R	BL-00556-NY
5.56 (0.219")	Acetal	Commercial	118 Rockwell R	BL-00556-AC
5.56 (0.219")	PTFE	Commercial	68 Rockwell R	BL-00556-PTF
5.56 (0.219")	Torlon (Polyamide-imide)	Bearing Grade	Rockwell E86 or M109-119	BL-00556-TO
5.56 (0.219")	Polypropylene	Commercial	86 Rockwell R	BL-00556-PP
6.00 (0.236")	Torlon (Polyamide-imide)	Bearing Grade	Rockwell E86 or M109-119	BL-00600-TO
6.35 (0.250")	Nylon (Polyamide 6/6)	Commercial	108 Rockwell R	BL-00635-NY
6.35 (0.250")	PVC	Grade 2	114 Rockwell R	BL-00635-PVC
6.35 (0.250")	Acetal	Commercial	118 Rockwell R	BL-00635-AC
6.35 (0.250")	Acrylic	Commercial	132 Rockwell R	BL-00635-ACR
6.35 (0.250")	PTFE	Commercial	68 Rockwell R	BL-00635-PTF
6.35 (0.250")	Polypropylene	Commercial	86 Rockwell R	BL-00635-PP
6.35 (0.250")	Torlon (Polyamide-imide)	Bearing Grade	Rockwell E86 or M109-119	BL-00635-TO
7.14 (0.281")	Nylon (Polyamide 6/6)	Commercial	108 Rockwell R	BL-00714-NY
7.14 (0.281")	Acetal	Commercial	118 Rockwell R	BL-00714-AC
7.14 (0.281")	PTFE	Commercial	68 Rockwell R	BL-00714-PTF

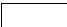
Stocked or Short Delivery

Usually Available Short Delivery


Long delivery or not in current production

Plastic Balls

Diameter (D) mm	Material	Precision Grade	Hardness	Part Number
7.94 (0.313")	Nylon (Polyamide 6/6)	Commercial	108 Rockwell R	BL-00794-NY
7.94 (0.313")	Acetal	Commercial	118 Rockwell R	BL-00794-AC
7.94 (0.313")	Acrylic	Commercial	132 Rockwell R	BL-00794-ACR
7.94 (0.313")	PTFE	Commercial	68 Rockwell R	BL-00794-PTF
7.94 (0.313")	Polypropylene	Commercial	86 Rockwell R	BL-00794-PP
7.94 (0.313")	Torlon (Polyamide-imide)	Bearing Grade	Rockwell E86 or M109-119	BL-00794-TO
8.73 (0.344")	Nylon (Polyamide 6/6)	Commercial	108 Rockwell R	BL-00873-NY
9.53 (0.375")	Nylon (Polyamide 6/6)	Commercial	108 Rockwell R	BL-00953-NY
9.53 (0.375")	Acetal	Commercial	118 Rockwell R	BL-00953-AC
9.53 (0.375")	Acrylic	Commercial	132 Rockwell R	BL-00953-ACR
9.53 (0.375")	PTFE	Commercial	68 Rockwell R	BL-00953-PTF
9.53 (0.375")	Torlon (Polyamide-imide)	Bearing Grade	Rockwell E86 or M109-119	BL-00953-TO
9.53 (0.375")	Polypropylene	Commercial	86 Rockwell R	BL-00953-PP
11.11 (0.437")	Acetal	Commercial	118 Rockwell R	BL-01111-AC
11.11 (0.437")	Nylon (Polyamide 6/6)	Commercial	108 Rockwell R	BL-01111-NY
11.11 (0.438")	Acrylic	Commercial	132 Rockwell R	BL-01111-ACR
11.11 (0.438")	PTFE	Commercial	68 Rockwell R	BL-01111-PTF
12.00 (0.472")	Acetal	Commercial	118 Rockwell R	BL-01200-AC
12.00 (0.472")	Acrylic	Commercial	132 Rockwell R	BL-01200-ACR
12.70 (0.500")	Nylon (Polyamide 6/6)	Commercial	108 Rockwell R	BL-01270-NY
12.70 (0.500")	PVC	Grade 2	114 Rockwell R	BL-01270-PVC
12.70 (0.500")	Acetal	Commercial	118 Rockwell R	BL-01270-AC
12.70 (0.500")	Acrylic	Commercial	132 Rockwell R	BL-01270-ACR
12.70 (0.500")	PTFE	Commercial	68 Rockwell R	BL-01270-PTF
12.70 (0.500")	Polypropylene	Commercial	86 Rockwell R	BL-01270-PP
12.70 (0.500")	Torlon (Polyamide-imide)	Bearing Grade	Rockwell E86 or M109-119	BL-01270-TO
14.29 (0.563")	Nylon (Polyamide 6/6)	Commercial	108 Rockwell R	BL-01429-NY
14.29 (0.563")	Acetal	Commercial	118 Rockwell R	BL-01429-AC
14.29 (0.563")	Acrylic	Commercial	132 Rockwell R	BL-01429-ACR
14.29 (0.563")	PTFE	Commercial	68 Rockwell R	BL-01429-PTF
15.88 (0.625")	Nylon (Polyamide 6/6)	Commercial	108 Rockwell R	BL-01588-NY
15.88 (0.625")	Acetal	Commercial	118 Rockwell R	BL-01588-AC
15.88 (0.625")	Acrylic	Commercial	132 Rockwell R	BL-01588-ACR
15.88 (0.625")	PTFE	Commercial	68 Rockwell R	BL-01588-PTF
15.88 (0.625")	Polypropylene	Commercial	86 Rockwell R	BL-01588-PP
17.46 (0.687")	PVC	Grade 2	114 Rockwell R	BL-01746-PVC
17.46 (0.687")	Polypropylene	Commercial	86 Rockwell R	BL-01746-PP
17.46 (0.687")	Nylon (Polyamide 6/6)	Commercial	108 Rockwell R	BL-01746-NY
17.46 (0.687")	Acrylic	Commercial	132 Rockwell R	BL-01746-ACR
19.05 (0.750")	Nylon (Polyamide 6/6)	Commercial	108 Rockwell R	BL-01905-NY
19.05 (0.750")	PVC	Grade 2	114 Rockwell R	BL-01905-PVC
19.05 (0.750")	Acetal	Commercial	118 Rockwell R	BL-01905-AC
19.05 (0.750")	Acrylic	Commercial	132 Rockwell R	BL-01905-ACR
19.05 (0.750")	PTFE	Commercial	68 Rockwell R	BL-01905-PTF
19.05 (0.750")	Polypropylene	Commercial	86 Rockwell R	BL-01905-PP
20.64 (0.813")	Nylon (Polyamide 6/6)	Commercial	108 Rockwell R	BL-02064-NY
22.23 (0.875")	Nylon (Polyamide 6/6)	Commercial	108 Rockwell R	BL-02223-NY
22.23 (0.875")	Acetal	Commercial	118 Rockwell R	BL-02223-AC
22.23 (0.875")	Acrylic	Commercial	132 Rockwell R	BL-02223-ACR
22.23 (0.875")	PTFE	Commercial	68 Rockwell R	BL-02223-PTF
22.23 (0.875")	Polypropylene	Commercial	86 Rockwell R	BL-02223-PP
25.40 (1.000")	Nylon (Polyamide 6/6)	Commercial	108 Rockwell R	BL-02540-NY
25.40 (1.000")	PVC	Grade 2	114 Rockwell R	BL-02540-PVC
25.40 (1.000")	Acetal	Commercial	118 Rockwell R	BL-02540-AC
25.40 (1.000")	Acrylic	Commercial	132 Rockwell R	BL-02540-ACR
25.40 (1.000")	PTFE	Commercial	68 Rockwell R	BL-02540-PTF
25.40 (1.000")	Polypropylene	Commercial	86 Rockwell R	BL-02540-PP

 Stocked or Short Delivery

 Usually Available Short Delivery

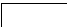
 Long delivery or not in current production

Plastic Balls


Diameter (D) mm	Material	Precision Grade	Hardness	Part Number
28.58 (1.125")	PVC	Grade 3	114 Rockwell R	BL-02858-PVC
28.58 (1.125")	Acetal	Commercial	118 Rockwell R	BL-02858-AC
28.58 (1.125")	Acrylic	Commercial	132 Rockwell R	BL-02858-ACR
28.58 (1.125")	Polypropylene	Commercial	86 Rockwell R	BL-02858-PP
30.16 (1.188")	Acetal	Commercial	118 Rockwell R	BL-03016-AC
30.16 (1.188")	PTFE	Commercial	68 Rockwell R	BL-03016-PTF
31.75 (1.250")	Nylon (Polyamide 6/6)	Commercial	108 Rockwell R	BL-03175-NY
31.75 (1.250")	PVC	Grade 3	114 Rockwell R	BL-03175-PVC
31.75 (1.250")	Acetal	Commercial	118 Rockwell R	BL-03175-AC
31.75 (1.250")	Acrylic	Commercial	132 Rockwell R	BL-03175-ACR
31.75 (1.250")	PTFE	Commercial	68 Rockwell R	BL-03175-PTF
31.75 (1.250")	Polypropylene	Commercial	86 Rockwell R	BL-03175-PP
34.93 (1.375")	Acetal	Commercial	118 Rockwell R	BL-03493-AC
34.93 (1.375")	Acrylic	Commercial	132 Rockwell R	BL-03493-ACR
34.93 (1.375")	Nylon (Polyamide 6/6)	Commercial	108 Rockwell R	BL-03493-NY
34.93 (1.375")	Polypropylene	Commercial	86 Rockwell R	BL-03493-PP
38.10 (1.500")	Nylon (Polyamide 6/6)	Commercial	108 Rockwell R	BL-03810-NY
38.10 (1.500")	PVC	Grade 3	114 Rockwell R	BL-03810-PVC
38.10 (1.500")	Acetal	Commercial	118 Rockwell R	BL-03810-AC
38.10 (1.500")	Acrylic	Commercial	132 Rockwell R	BL-03810-ACR
38.10 (1.500")	PTFE	Commercial	68 Rockwell R	BL-03810-PTF
38.10 (1.500")	Polypropylene	Commercial	86 Rockwell R	BL-03810-PP
44.45 (1.750")	Nylon (Polyamide 6/6)	Commercial	108 Rockwell R	BL-04445-NY
44.45 (1.750")	PVC	Grade 3	114 Rockwell R	BL-04445-PVC
44.45 (1.750")	Acetal	Commercial	118 Rockwell R	BL-04445-AC
44.45 (1.750")	Acrylic	Commercial	132 Rockwell R	BL-04445-ACR
44.45 (1.750")	Polypropylene	Commercial	86 Rockwell R	BL-04445-PP
50.80 (2.000")	Acetal	Commercial	118 Rockwell R	BL-05080-AC
50.80 (2.000")	Acrylic	Commercial	132 Rockwell R	BL-05080-ACR
50.80 (2.000")	PTFE	Commercial	68 Rockwell R	BL-05080-PTF
50.80 (2.000")	Polypropylene	Commercial	86 Rockwell R	BL-05080-PP
57.15 (2.250")	PVC	Grade 3	114 Rockwell R	BL-05715-PVC
57.15 (2.250")	Acrylic	Commercial	132 Rockwell R	BL-05715-ACR
57.15 (2.250")	Polypropylene	Commercial	86 Rockwell R	BL-05715-PP
63.50 (2.500")	Acrylic	Commercial	132 Rockwell R	BL-06350-ACR
63.50 (2.500")	Polypropylene	Commercial	86 Rockwell R	BL-06350-PP
69.85 (2.750")	Acrylic	Commercial	132 Rockwell R	BL-06985-ACR
69.85 (2.750")	Polypropylene	Commercial	86 Rockwell R	BL-06985-PP
76.20 (3.000")	Acrylic	Commercial	132 Rockwell R	BL-07620-ACR
76.20 (3.000")	Polypropylene	Commercial	86 Rockwell R	BL-07620-PP
101.60 (4.000")	Acrylic	Commercial	132 Rockwell R	BL-10160-ACR
101.60 (4.000")	Polypropylene	Grade 3	86 Rockwell R	BL-10160-PP

Plastic Balls - Bored

Diameter (D) mm	Inside Diameter (d1) mm	Width (B) mm	Shoulder Diameter (dn) mm	Part Number
5.20 (0.205")	2.000	4.00	3.90	Plastic BLB-00520-00200-W3
7.90 (0.311")	3.000	6.00	5.40	Plastic BLB-00790-00300-W3
8.25 (0.325")	4.000	5.00	6.25	Plastic BLB-00825-00400-W3
10.20 (0.402")	5.000	6.00	8.00	Plastic BLB-01020-00500-W3
10.20 (0.402")	6.000	6.00	8.00	Plastic BLB-01020-00600-W3
11.10 (0.437")	5.000	8.00	7.70	Plastic BLB-01110-00500-W3
11.28 (0.444")	4.830	7.92	7.62	Plastic BLB-01128-00483-W3
12.70 (0.500")	6.000	9.00	8.90	Plastic BLB-01270-00600-W3
13.11 (0.516")	6.350	9.53	8.99	Plastic BLB-01311-00635-W3
13.20 (0.520")	8.000	8.00	10.00	Plastic BLB-01320-00800-W3

 Stocked or Short Delivery

 Usually Available Short Delivery

 Long delivery or not in current production

Plastic Balls - Bored

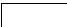
Diameter (D) mm	Inside Diameter (d1) mm	Width (B) mm	Shoulder Diameter (dn) mm	Part Number
15.80 (0.622")	8.000	12.00	10.30	Plastic BLB-01580-00800-W3
15.88 (0.625")	7.940	11.10	11.35	Plastic BLB-01588-00794-W3
16.00 (0.630")	10.000	9.00	13.00	Plastic BLB-01600-01000-W3
18.00 (0.709")	12.000	10.00	15.00	Plastic BLB-01800-01200-W3
18.24 (0.718")	9.530	12.70	12.80	Plastic BLB-01824-00953-W3
19.00 (0.748")	10.000	14.00	12.90	Plastic BLB-01900-01000-W3
21.03 (0.828")	11.110	14.27	15.27	Plastic BLB-02103-01111-W3
22.00 (0.866")	15.000	12.00	18.00	Plastic BLB-02200-01500-W3
22.22 (0.875")	12.000	16.00	15.40	Plastic BLB-02222-01200-W3
23.83 (0.938")	12.700	15.88	17.78	Plastic BLB-02383-01270-W3
25.10 (0.988")	17.000	14.00	20.00	Plastic BLB-02510-01700-W3
25.25 (0.994")	14.000	19.00	16.80	Plastic BLB-02525-01400-W3
28.30 (1.114")	16.000	21.00	19.30	Plastic BLB-02830-01600-W3
28.58 (1.125")	15.880	19.05	21.28	Plastic BLB-02858-01588-W3
28.90 (1.138")	20.000	16.00	24.00	Plastic BLB-02890-02000-W3
31.35 (1.234")	18.000	23.00	21.80	Plastic BLB-03135-01800-W3
33.32 (1.312")	19.050	22.23	24.84	Plastic BLB-03332-01905-W3
34.90 (1.374")	20.000	25.00	24.30	Plastic BLB-03490-02000-W3
35.50 (1.398")	25.000	20.00	29.00	Plastic BLB-03550-02500-W3
38.10 (1.500")	22.000	28.00	25.80	Plastic BLB-03810-02200-W3
40.90 (1.610")	30.000	22.00	34.00	Plastic BLB-04090-03000-W3
42.80 (1.685")	25.000	31.00	29.50	Plastic BLB-04280-02500-W3
44.45 (1.750")	25.400	34.93	32.23	Plastic BLB-04445-02540-W3
51.00 (2.008")	30.000	37.00	34.80	Plastic BLB-05100-03000-W3

Rubber Balls


Diameter (D) mm	Material	Hardness	Part Number
4.76 (0.187")	Santoprene Rubber	Shore 40D	BL-00476-R40D
4.76 (0.187")	Santoprene Rubber	Shore 87A	BL-00476-R87A
12.70 (0.500")	Santoprene Rubber	Shore 40D	BL-01270-R40D
15.88 (0.625")	Santoprene Rubber	Shore 87A	BL-01588-R87A
19.05 (0.750")	Santoprene Rubber	Shore 40D	BL-01905-R40D
19.05 (0.750")	Santoprene Rubber	Shore 87A	BL-01905-R87A
25.40 (1.000")	Santoprene Rubber	Shore 87A	BL-02540-R87A
31.75 (1.250")	Santoprene Rubber	Shore 40D	BL-03175-R40D
31.75 (1.250")	Santoprene Rubber	Shore 87A	BL-03175-R87A
38.10 (1.500")	Santoprene Rubber	Shore 40D	BL-03810-R40D
38.10 (1.500")	Santoprene Rubber	Shore 87A	BL-03810-R87A
44.45 (1.750")	Santoprene Rubber	Shore 40D	BL-04445-R40D
44.45 (1.750")	Santoprene Rubber	Shore 87A	BL-04445-R87A
50.80 (2.000")	Santoprene Rubber	Shore 87A	BL-05080-R87A
57.15 (2.250")	Santoprene Rubber	Shore 40D	BL-05715-R40D
63.50 (2.500")	Santoprene Rubber	Shore 87A	BL-06350-R87A
69.85 (2.750")	Santoprene Rubber	Shore 87A	BL-06985-R87A
82.55 (3.250")	Santoprene Rubber	Shore 87A	BL-08255-R87A
95.25 (3.750")	Santoprene Rubber	Shore 87A	BL-09525-R87A

Threaded Metallic Balls

Diameter (D) mm	Thread Size	Precision Grade	Hardness	Part Number
3.000 (0.118")	M1.2x0.25 Thread x 1.5mm Deep	Grade 100	35 Rockwell C	Titanium Ti-Gr23 Ti-6Al4V- ELI BLT-00300-T23-12
3.000 (0.118")	M1.6x0.35 Thread x 1.5mm Deep	Grade 100	35 Rockwell C	Titanium Ti-Gr23 Ti-6Al4V- ELI BLT-00300-T23-16
4.000 (0.157")	M1.2x0.25 Thread x 2mm Deep	Grade 100	35 Rockwell C	Titanium Ti-Gr23 Ti-6Al4V- ELI BLT-00400-T23-12

 Stocked or Short Delivery

 Usually Available Short Delivery

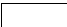
 Long delivery or not in current production

Threaded Metallic Balls


Diameter (D) mm	Thread Size	Precision Grade	Hardness	Part Number
4.000 (0.157")	M1.6x0.35 Thread x 2mm Deep	Grade 100	35 Rockwell C	Titanium Ti-Gr23 Ti-6Al4V- ELI BLT-00400-T23-16
5.000 (0.197")	M1.6x0.35 Thread x 2.5mm Deep	Grade 100	35 Rockwell C	Titanium Ti-Gr23 Ti-6Al4V- ELI BLT-00500-T23-16
5.000 (0.197")	M1.2x0.25 Thread x 2.5mm Deep	Grade 100	35 Rockwell C	Titanium Ti-Gr23 Ti-6Al4V- ELI BLT-00500-T23-12
6.000 (0.236")	M1.2x0.25 Thread x 3mm Deep	Grade 100	35 Rockwell C	Titanium Ti-Gr23 Ti-6Al4V- ELI BLT-00600-T23-12
6.000 (0.236")	M1.6x0.35 Thread x 3mm Deep	Grade 100	35 Rockwell C	Titanium Ti-Gr23 Ti-6Al4V- ELI BLT-00600-T23-16
8.000 (0.315")	M1.6x0.35 Thread x 4mm Deep	Grade 100	35 Rockwell C	Titanium Ti-Gr23 Ti-6Al4V- ELI BLT-00800-T23-16
8.000 (0.315")	M1.2x0.25 Thread x 4mm Deep	Grade 100	35 Rockwell C	Titanium Ti-Gr23 Ti-6Al4V- ELI BLT-00800-T23-12

Tooling Balls

Diameter (A) mm	Shank Diameter (B) mm	Base to Centre (C) mm	Shoulder to Centre (D) mm	Part Number
6.000 (0.236")	3.000	10.000	6.000	Stainless Steel BLTO-00600-S440-1SP
6.000 (0.236")	3.000	10.000	6.000	Carbon Steel BLTO-00600-CS-1S
6.350 (0.250")	3.175	14.224	5.080	Carbon Steel BLTO-00635-CS-S2
6.350 (0.250")	3.175	14.224	5.080	Carbon Steel BLTO-00635-CS-S2P
6.350 (0.250")	3.175	14.300		Stainless Steel BLTO-00635-S440-1
6.350 (0.250")	3.175	14.300		Carbon Steel BLTO-00635-CS-1P
6.350 (0.250")	3.175	14.300		Stainless Steel BLTO-00635-S440-1P
6.350 (0.250")	3.175	14.300		Carbon Steel BLTO-00635-CS-1
6.350 (0.250")	3.175	14.300		Carbon Steel BLTO-00635-CS-2P
6.350 (0.250")	3.175	14.300		Carbon Steel BLTO-00635-CS-2
6.350 (0.250")	3.175	14.300	5.080	Carbon Steel BLTO-00635-CS-1S
6.350 (0.250")	3.175	14.300	5.080	Carbon Steel BLTO-00635-CS-1SP
6.350 (0.250")	3.175	14.300	5.080	Stainless Steel BLTO-00635-S440-1SP
6.350 (0.250")	3.175	14.300	5.080	Stainless Steel BLTO-00635-S440-1S
9.525 (0.375")	4.763	19.050		Carbon Steel BLTO-00953-CS-1P
9.525 (0.375")	4.763	19.050		Stainless Steel BLTO-00953-S440-1
9.525 (0.375")	4.763	19.050		Carbon Steel BLTO-00953-CS-1
9.525 (0.375")	4.763	19.050		Carbon Steel BLTO-00953-CS-2P
9.525 (0.375")	4.763	19.050		Carbon Steel BLTO-00953-CS-2
9.525 (0.375")	4.763	19.050		Stainless Steel BLTO-00953-S440-1P
9.525 (0.375")	4.763	19.050	7.620	Carbon Steel BLTO-00953-CS-S2
9.525 (0.375")	4.763	19.050	7.620	Carbon Steel BLTO-00953-CS-S2P
9.525 (0.375")	4.763	19.050	7.620	Carbon Steel BLTO-00953-CS-1S
9.525 (0.375")	4.763	19.050	7.620	Carbon Steel BLTO-00953-CS-1SP
9.525 (0.375")	4.763	19.050	7.620	Stainless Steel BLTO-00953-S440-1SP
9.525 (0.375")	4.763	19.050	7.620	Stainless Steel BLTO-00953-S440-1S
12.000 (0.472")	6.000	22.000	12.000	Carbon Steel BLTO-01200-CS-C1
12.000 (0.472")	6.000	22.000	12.000	Carbon Steel BLTO-01200-CS-C1-T
12.700 (0.500")	6.350	7.925	7.938	Carbon Steel BLTO-01270-CS-C1
12.700 (0.500")	6.350	7.925	7.938	Carbon Steel BLTO-01270-CS-C1-T
12.700 (0.500")	6.350	7.925	7.938	Stainless Steel BLTO-01270-S440-C1-T
12.700 (0.500")	6.350	7.925	7.938	Stainless Steel BLTO-01270-S440-C1
12.700 (0.500")	6.350	15.875	7.938	Carbon Steel BLTO-01270-CS-C2-A
12.700 (0.500")	6.350	15.875	7.938	Carbon Steel BLTO-01270-CS-S2-A
12.700 (0.500")	6.350	22.225	12.700	Carbon Steel BLTO-01270-CS-C2-B
12.700 (0.500")	6.350	23.876		Carbon Steel BLTO-01270-CS-2P-A
12.700 (0.500")	6.350	23.876		Carbon Steel BLTO-01270-CS-1P-A
12.700 (0.500")	6.350	23.876		Carbon Steel BLTO-01270-CS-1-A
12.700 (0.500")	6.350	23.876		Carbon Steel BLTO-01270-CS-2-A
12.700 (0.500")	6.350	23.876	10.160	Carbon Steel BLTO-01270-CS-1SP-A

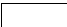
 Stocked or Short Delivery

 Usually Available Short Delivery


 Long delivery or not in current production

Tooling Balls

Diameter (A) mm	Shank Diameter (B) mm	Base to Centre (C) mm	Shoulder to Centre (D) mm	Part Number
12.700 (0.500")	6.350	23.876	10.160	Stainless Steel BLTO-01270-S440-1S-A
12.700 (0.500")	6.350	23.876	10.160	Stainless Steel BLTO-01270-S440-1SP-A
12.700 (0.500")	6.350	23.876	10.160	Carbon Steel BLTO-01270-CS-1S-A
12.700 (0.500")	6.350	23.876	10.160	Carbon Steel BLTO-01270-CS-S2P-A
12.700 (0.500")	6.350	23.876	10.160	Carbon Steel BLTO-01270-CS-S2-B
12.700 (0.500")	6.350	23.876	12.700	Carbon Steel BLTO-01270-CS-C2-C
12.700 (0.500")	6.350	28.575	12.700	Carbon Steel BLTO-01270-CS-S2P-B
12.700 (0.500")	6.350	28.575	12.700	Carbon Steel BLTO-01270-CS-S2-C
12.700 (0.500")	6.350	34.925	12.700	Carbon Steel BLTO-01270-CS-S2-D
12.700 (0.500")	6.350	34.925	12.700	Stainless Steel BLTO-01270-S440-1S-B
12.700 (0.500")	6.350	34.925	12.700	Stainless Steel BLTO-01270-S440-1SP-B
12.700 (0.500")	6.350	34.925	12.700	Carbon Steel BLTO-01270-CS-S2P-C
12.700 (0.500")	6.350	34.925	12.700	Carbon Steel BLTO-01270-CS-1S-B
12.700 (0.500")	6.350	34.925	12.700	Carbon Steel BLTO-01270-CS-1SP-B
12.700 (0.500")	6.350	38.100		Carbon Steel BLTO-01270-CS-2P-B
12.700 (0.500")	6.350	38.100		Carbon Steel BLTO-01270-CS-1P-B
12.700 (0.500")	6.350	38.100		Carbon Steel BLTO-01270-CS-2-B
12.700 (0.500")	6.350	38.100		Carbon Steel BLTO-01270-CS-1-B
12.700 (0.500")	6.350	38.100	12.700	Carbon Steel BLTO-01270-CS-S2-E
12.700 (0.500")	6.350	41.275	25.400	Carbon Steel BLTO-01270-CS-S2-F
12.700 (0.500")	6.350	41.275	25.400	Carbon Steel BLTO-01270-CS-S2P-D
12.700 (0.500")	6.350	47.625	31.750	Carbon Steel BLTO-01270-CS-S2-G
12.700 (0.500")	6.350	73.025		Carbon Steel BLTO-01270-CS-2-C
12.700 (0.500")	7.938	23.876	12.700	Carbon Steel BLTO-01270-CS-C2-D
12.700 (0.500")	7.938	38.100		Carbon Steel BLTO-01270-CS-2-D
12.700 (0.500")	7.938	38.100	12.700	Carbon Steel BLTO-01270-CS-S2-H
12.700 (0.500")	9.525	38.100		Carbon Steel BLTO-01270-CS-1P-C
12.700 (0.500")	9.525	38.100		Carbon Steel BLTO-01270-CS-1-C
12.700 (0.500")	9.525	38.100	12.700	Carbon Steel BLTO-01270-CS-S2-J
15.875 (0.625")	7.938	26.670	11.430	Carbon Steel BLTO-01588-CS-S2P
15.875 (0.625")	7.938	26.670	11.430	Carbon Steel BLTO-01588-CS-S2
15.875 (0.625")	7.938	27.000		Carbon Steel BLTO-01588-CS-2
15.875 (0.625")	7.938	27.000		Carbon Steel BLTO-01588-CS-2P
19.050 (0.750")	9.525	31.750		Carbon Steel BLTO-01905-CS-2P
19.050 (0.750")	9.525	31.750		Carbon Steel BLTO-01905-CS-2
19.050 (0.750")	9.525	31.750	12.700	Stainless Steel BLTO-01905-S440-1SP
19.050 (0.750")	9.525	31.750	12.700	Carbon Steel BLTO-01905-CS-1S
19.050 (0.750")	9.525	31.750	12.700	Carbon Steel BLTO-01905-CS-S2
19.050 (0.750")	9.525	31.750	12.700	Carbon Steel BLTO-01905-CS-S2P
22.225 (0.875")	11.113	36.576		Carbon Steel BLTO-02223-CS-2P
25.400 (1.000")	12.700	41.275		Carbon Steel BLTO-02540-CS-2P
25.400 (1.000")	12.700	41.275		Carbon Steel BLTO-02540-CS-2
25.400 (1.000")	12.700	41.275	17.780	Carbon Steel BLTO-02540-CS-S2P
25.400 (1.000")	12.700	41.275	17.780	Carbon Steel BLTO-02540-CS-S2

 Stocked or Short Delivery

 Usually Available Short Delivery

 Long delivery or not in current production

TIPS

Chrome steel and 440C stainless are bearing grade balls. 304 and 316 grade stainless are softer and used for corrosion resistance and low load.

440C grade stainless is highly magnetic. 304 and 316 grade stainless are slightly magnetic.

Threaded Titanium balls are suitable for body piercings.

Silicon Nitride (Si_3N_4) is a grey ceramic. Zirconia (ZrO_2) is off white. Ruby is a reddish colour and sapphire has a glassy appearance, but not perfectly clear.

Precision grades indicate the tolerance of the diameter and the roundness. The lower the number the more precise.

<http://www.minibearings.com.au/technical/balls/grades/>

Polypropylene balls float in water and can be used for float levels.

Rubber balls are not toys. They are used for chemical applications. Refer to the website for full details.

<http://www.minibearings.com.au/store/categories/santoprene/>



Distributed By

Miniature Bearings Australia
<http://www.minibearings.com.au>
sales@minibearings.com.au

Resellers: Please place your contact sticker over our details

Avoid verbal communication

We sell an extensive range of products with varying amounts of technical data. Please assist us to provide you with accurate information by placing your orders and enquiries online or by e-mail.

Balls Range 2018